

SBI CLERK - PRACTICE SET

Answers with Explanation

English Language

1. (e) 'Later' will be replaced by 'latter'. 'Latter' means referring to the second of two persons or things mentioned previously and here, it has been used for the unvaccinated people.
The experience with the new variant Omicron is that it is so infectious, it does not discriminate among the vaccinated and the unvaccinated, though severe disease and death is disproportionately among the latter.
2. (b) As per the 1st paragraph, it can be identified that the correct answer is 'Molnupiravir'. **ACHIEVERS In Focus**
Molnupiravir, which was approved this month by the U.S. Food and Drug administration, on the heels of Paxlovid by Pfizer Inc., is said to be administered as a pill – its key selling point. thirteen companies in India are set to make this drug.
3. (d) We can identify the correct statements by reading the second paragraph of the passage. Statement A is incorrect as we can see the last line of the 1st paragraph and identify that 90% of India's adults have been inoculated with one dose.
Statement B – A combination of Novavax and Astra Zeneca (Covishield) was also effective in boosting antibodies, according to the COVBOOST study in the United Kingdom.
Statement C – The new directives say that "precaution doses", which are third doses of the vaccines an individual has already been inculcated with, will be available for healthcare and frontline workers and those above 60 with comorbidities.
4. (c) The context says that the 'precaution dose' has been administered to an individual and it will be available for healthcare and frontline workers and those above 60 with comorbidities. For vaccination, 'inoculated' is the correct word.
Inculcate – incriminate, accuse
Emancipate – discharge, release, liberate
Eject – cast out, remove **ACHIEVERS In Focus**
5. (d) We can identify the incorrect statements by reading the passage carefully.
Statement II is correct and we can find it after reading the 2nd paragraph. "The 15–17 years age group will get only Covaxin from January 3. That several Indians have been exposed to a live infection in the second wave that only improves the odds of protection."
Statement I can be identified that it is incorrect, from the 2nd paragraph.
Statement I The only study on mixing Covaxin and Covishield – that resulted from a mix-up Uttar Pradesh – showed that antibody levels were higher than two doses of either vaccine.
Statement III – Corbevax, by BiologicalE, is a protein subunit vaccine as is Covovax to be made by the Serum Institute of India.
6. (d) 'Moderna' has not been mentioned in the passage above. so, the correct answer is option 4. **ACHIEVERS In Focus**
7. (b) Feasibility – practicability, possibility
Opp. – doubtfulness
Incredible – fantastic, unbelievable / doubtful, unlikely
Antipathy – hostility, enmity, animosity
8. (a) It is clearly stated in the last few lines of the paragraph – The second wave revealed a treatment fiasco with Remdesivir – sans any therapeutic merit – that saw irrational demand and black marketing.
Statement C is false. As per the 1st paragraph, it is about 'Covovax'. "Covovax has already been approved by the WHO under its Emergency Use Listing and will be available globally as part of the COVAX initiative to ensure that at least 40% of the world is vaccinated on priority."
9. (b) The word in option 2, 'losses' refers to, something that is lost to someone; a thing that is gone from someone.
E.g. Due to the flood there was no apartment building that didn't have losses.
10. (c) The word in option 3, 'bitter' refers, refers to, painful or unpleasant to accept or contemplate
E.g. After having had a bitter experience in her first marriage, Shelly was not comfortable with getting married again.
11. (c) The word in option 3, 'safety' refers to, the condition of being protected from or unlikely to cause danger, risk, or injury. **ACHIEVERS In Focus**
E.g. Getting into the water with a crocodile was considered an unnecessary safety risk.
12. (e) The word in option 5, 'crowds', refers to, a large number of people gathered together.
E.g. The crowds at the One Direction concert sang along with the singers for every single song.
13. (d) The word in option 3, 'history' refers to, the study of past events particularly in human affairs.
E.g. The history of India is a turbulent one, with many different rules and dynasties presiding over it at some point.
14. (b) Now let us look at the meaning of the correct words
Adamant : very sure; refusing to change your mind.
Resolute : having or showing great determination.
Here, both 'B' and 'C' aptly fit in the context of the sentence. The sentence means someone is so determined about her beliefs that no one can change her mind.
15. (c) Now let us look at the meaning of the correct words:
Shenanigans : actions or behaviours that are dishonest, immoral, or stupid
Waggery: playful, reckless behaviour that is not intended to cause serious harm.
Here, both 'A' and 'B' aptly fit in the context of the sentence. The sentence means the playful and reckless behavior of comedians resulted in hilarious consequence.

16. (c) In the given sentence, the format is noun + preposition + noun
The rule says: If a preposition comes after a noun and then the same noun is repeated, the noun should be used in a singular form. Thus the verb accompanying the noun will be used accordingly i.e. singular.
Hence, instead of weeks after weeks, week after week is correct.

ACHIEVERS In Focus

Here, 'after' is the preposition that is used before and after the noun 'weeks' so, the noun should be singular i.e. week.

17. (b) The given sentence is erroneous for the wrong usage of the main verb after the phrase **looking forward to**.

Gerund : It is denoted by 'V1 + ing'

When there are certain phrases in the sentence like addicted to, accustomed to, look forward to, taken to, with a view to, etc then gerund is used with them.

Therefore replace the main verb 'receive' with 'receiving' as 'looking forward to' is present in the sentence.

18. (b) The error lies in the wrong usage of the pronoun 'me' in Part B

'me' will be replaced with 'I', subjective case of pronoun
Wherever any form of 'be' acts as main verb i.e. was, then we will always use subjective case after it.

19. (c) With infinitive to the usage or 'ing' is incorrect here.

Structure-subject + verb + to-infinitive V₁ Also, Infinitive works as a noun, adjective, adverb, or object.

Let's see some examples –

He wants to play (noun)

I can't wait to go (adverb)

The man to call is Shyam. (Adjective)

ACHIEVERS In Focus

20. (a) The given sentence is a second conditional sentence
Second conditional sentences are useful expressing outcomes that are completely unrealistic or will not likely happen in the future.

Second conditional sentences use the simple past tense in the if-clause and an auxiliary modal verb (e.g. could, should, would, might) in the main clause (the one that expresses the unrealistic or unlikely outcome).

If + subject + V₂ + object, subject + would/should/could/might + V₁ + object

For example : If you went to bed earlier, you would not be so tired. (but I'm not sure he would be tired or not)

In the given sentence, if clause should use V₂ form of the verb.

Hence, If I understand what is wrongly used instead of 'If I understand what' should be used in the if-clause.

21. (d) **Writes** is a verb, and thus needs an adverb to modify it.
Hence, 'writes sloppily' is the correct replacement for the underlined phrase.

22. (c) If two actions take place one after the other in the future, and if the second action depends on the first action, the first action is in simple present tense and the second action in the simple future tense.

Example – She will come to meet you as soon as you reach Delhi.

'Until/unless' is not followed by 'not'

ACHIEVERS In Focus

So, here we have to omit 'not' in the sentence

Here in the given sentence, **first the train will get a signal** then only **it will leave the platform**. It is the **first action**, so it will be in the simple present tense.

23. (a) The given sentence is a participle phrase. When we want to emphasize that one thing happened before another, we can use a perfect participle for the earlier action. In the given sentence, we cannot write a participle phrase in a passive voice because in the main clause the subject has already been mentioned which is "I" so don't write a passive voice in the participle phrase.

Let's see an example –

Having forgotten to take my keys, I had to borrow a set from my landlord.

Solution (24 – 28) :

24. (c) 25. (a) 26. (d) 27. (d) 28. (b)

Going through the sentences, we can infer that these are based on the difference in number of cases and deaths among various regions. Here, (C) being an independent statement is the most suitable sentence to begin the paragraph. Further, (A) will follow (C) because it mentions a contrast from (C) by stating how the disruption is uneven across various regions. This is further supported by a generalized statement (F) which mentions the variations across Europe, American, Asia and Africa. Further, (D) is fixed and is the fourth sentence after rearrangement. (D) will be followed by (B) which establishes a comparison between India, U.S and U.K. Finally, the paragraph will be concluded by sentence (E), which states the lack of clarity on the reasons behind such variations. Therefore, the correct sequence of the sentences will be CAFDBE.

29. (e) The given sentence is talking about the importance of connectivity for the development of the Bay of Bengal region. Therefore the most appropriate word to be filled in the blank is 'Essential'.

Also, the use of word 'developing' in the sentence indicates the use of the word 'essential' in the blank.

The word 'Essential' means Absolutely necessary; extremely important

Example : Patience is an essential attribute for teacher.

30. (d) Both loudly and aloud are adverbs but have different meanings.

Loudly means in high volume

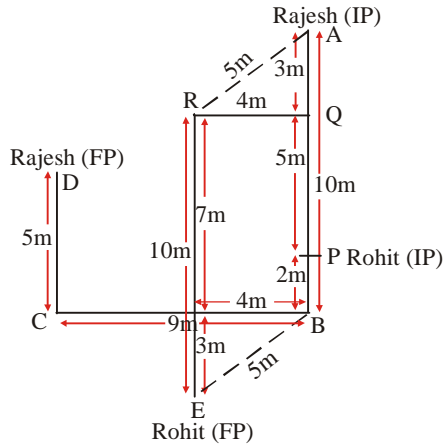
Aloud means audibly

ACHIEVERS In Focus

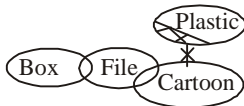
In the given sentence, the teacher read the poem in a manner that was audible to the class. Hence, here we will use the adverb aloud

Reasoning Ability

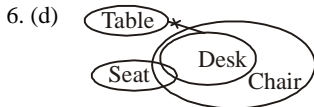
1. (c)
(2-4):



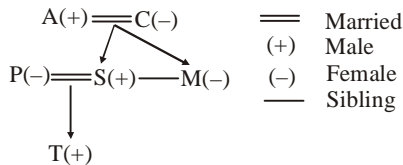
2. (d) 3. (a) 4. (e)
5. (b)



ACHIEVERS In Focus



(7-8):



7. (c) 8. (c)

(9-11):

Word	Code
Gaur	ZTM
Jhumar	MPS
Gugga	GLT
Bihu	VHO
Huttari	VOZ
Giddha	EJT
Painka	RJE
Raslila	YRE
Savari/Jhora	LKS/RGA

ACHIEVERS In Focus

9. (d) 10. (e) 11. (b)

(12-14):

ACHIEVERS In Focus

Shelves	Boxes
9	H
8	D
7	B
6	E
5	G
4	C
3	A
2	F
1	I

ACHIEVERS In Focus

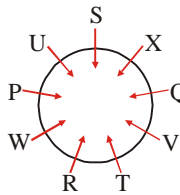
12. (a) 13. (d) 14. (c)
15. (e) 16. (b) 17. (e)

(18-20):

Month	22nd	27th
March (31)	Sharma	Richard
April (30)	Dany, Kevin	Vijay, Pollard
May (31)	Smith, Bravo	Aswin

18. (e) 19. (d) 20. (d)
21. (c) 22. (a) 23. (c)

(24-26):



ACHIEVERS In Focus

24. (c) 25. (e) 26. (b)

(27-29):



27. (a) 28. (a) 29. (e)
30. (b) 31. (c) 32. (e)

(33-35):

Positions	Person
General Manager	L
Assistant Manager	N
Deputy Assistant Manager	P
Food Director	R
Restaurant Manager	M
Food Runner	Q
Cashier	O

33. (d) 34. (e) 35. (b)

Numerical Ability

1. (b) Required difference
 $= (1400 + 2000 + 1000 + 2000) - (1800 + 1000 + 2000 + 1000)$
 $= 6400 - 5800 = 600$

2. (b) Required percentage ACHIEVERS In Focus

$$= \frac{1800}{1200 + 2000 + 1800 + 1400} \times 100$$

$$= \left(\frac{1800}{6400}\right) \times 100 \approx 28\%$$

3. (a) Required difference
 $= (1400 + 2400 + 1000 + 2000) - (1000 + 1600 + 1000 + 2000)$
 $= 6800 - 5600 = 1200$

ACHIEVERS In Focus

4. (e) Required ratio
 $= (2000 + 2400) : (1200 + 2000)$
 $= 4400 : 3200 = 11 : 8$

5. (c) Required percentage
 $= \frac{1200 + 1000 + 1200 + 1400}{2000 + 1600 + 2000 + 2400} \times 100$
 $= \left(\frac{4800}{8000}\right) \times 100 = 60\%$

6. (b) $28 \times 1 + 1 = 29$
 $29 \times 2 + 2 = 60$
 $60 \times 3 + 3 = 183$
 $183 \times 4 + 4 = 736$
 $736 \times 5 + 5 = 3685$

7. (a)
$$\begin{array}{ccccccccc} 3 & 12 & 96 & 384 & 3072 & 12288 \\ \times 4 & \times 8 & \times 4 & \times 8 & \times 4 & \times 8 \end{array}$$

8. (b) $1290 \times \frac{1}{2} = 645$

$$645 \times \frac{2}{3} = 430$$

ACHIEVERS In Focus

$$430 \times \frac{3}{4} = 322.5$$

$$322.5 \times \frac{4}{5} = 258$$

$$258 \times \frac{5}{6} = 215$$

9. (a) $132 + (1^2 - 1) = 132$
 $132 + (2^2 - 2) = 134$
 $134 + (3^2 - 3) = 140$
 $140 + (4^2 - 4) = 152$
 $152 + (5^2 - 5) = 172$

10. (a)
$$\begin{array}{ccccccccc} 115 & 138 & 164 & 193 & 225 & 260 \\ +23 & +26 & +29 & +32 & +35 \\ +3 & +3 & +3 & +3 \end{array}$$

(11 - 15):

Shops	The number of burgers and sandwiches sold	The number of burgers sold	The number of sandwiches sold
P	$\frac{4000}{5} = 800$	$\frac{800 \times 2}{5} = 320$	$800 - 320 = 480$
Q	$\frac{4000 \times 3}{20} = 600$	$\frac{600 \times 3}{10} = 180$	$600 - 180 = 420$
R	$\frac{4000 \times 3}{10} = 1200$	$\frac{1200}{2} = 600$	$1200 - 600 = 600$
S	$\frac{4000}{4} = 1000$	$\frac{1000 \times 9}{20} = 450$	$1000 - 450 = 550$
T	$\frac{4000}{10} = 400$	$\frac{400 \times 7}{20} = 140$	$400 - 140 = 260$

11. (d) Required percentage $= \frac{600 - 480}{480} \times 100 = 25\%$ more

12. (a) Required ratio $= 600 : 420 = 10 : 7$

13. (c) The number of burgers sold in shop U $= 350 - 140 = 210$
The number of sandwiches sold in shop U $= 410 - 260 = 150$

ACHIEVERS In Focus

$$\text{Required average} = \frac{210 + 150}{2} = 180$$

14. (d) The number of pizzas sold in shop P $= 400 \times 3 - 800 = 400$

$$\text{The number of pizzas in shop P} = 400 \times \frac{4}{3} = \frac{1600}{3}$$

$$\text{Required number} = \left(\frac{1600}{3}\right) \times \frac{3}{8} = 200$$

15. (d) The number of sandwiches sold in shop S and T
 $= 550 + 260 = 810$

$$\text{Required difference} = 1000 - 810 = 190$$

16. (b) $9^2 \times 7^2 \div \sqrt{441} - 64 = 5^2$

$$\Rightarrow \frac{81 \times 49}{21} - 64 = 5^2$$

$$\Rightarrow 27 \times 7 - 64 = 5^2$$

$$\Rightarrow 189 - 64 = 5^2$$

$$\Rightarrow 125 = 5^2$$

$$\Rightarrow 5^2 = 5^3$$

$$\Rightarrow ? = 3$$

ACHIEVERS In Focus

17. (e) $80\% \text{ of } 240 + 360 \div 12 + 16 = (?)$

$$\Rightarrow 192 + 30 + 16 = (?)$$

$$\Rightarrow 238 = (?)$$

18. (d)
$$\frac{\left(27 \times \frac{15}{3} + 64.2\right)}{?} = 6$$

$$\Rightarrow \frac{\left(27 \times \frac{15}{3} + 64.2\right)}{6} = ?$$

$$\Rightarrow ? = \frac{135 + 64.2}{6} \Rightarrow ? = \frac{199.2}{6} = 33.2$$

19. (a) $\sqrt{18 + \sqrt{43 + \sqrt{36}}} + 4^3 - ? = 7^2$

$$\Rightarrow \sqrt{18 + \sqrt{43 + 6}} + 4^3 - ? = 7^2$$

$$\Rightarrow \sqrt{18 + 7} + 64 - ? = 49$$

$$\Rightarrow ? = 20$$

ACHIEVERS In Focus

20. (e) $1\frac{3}{7} + \frac{4}{7} + \frac{?}{35} = 2\frac{6}{7}$

$$\frac{?}{35} = 2 + \frac{6}{7} - 1 - \frac{3}{7} - \frac{4}{7}$$

$$\Rightarrow \frac{?}{35} = \frac{6}{7} \Rightarrow ? = 30$$

21. (b) Total of the present ages of Shilpa, Smitha and Kanna $= 29 \times 3 - 9 = 78$ years

Let Kanna's present age is x years

Then present age of Smitha $= 4x$ years

$$\text{Present age of Shilpa} = \frac{8}{9} \times (4x - 9) + 9$$

$$x + 4x + \frac{8}{9} \times (4x - 9) + 9 = 78$$

$$\Rightarrow 77x = 693$$

$$\Rightarrow x = 9$$

ACHIEVERS In Focus

$$\text{Present age of Shilpa} = \frac{8}{9} \times (4 \times 9 - 9) + 9 = 33 \text{ years}$$

22. (d) Ratio of the efficiency of Ajith and Vijay is 4 : 3

Ratio of the time taken by Ajith and Vijay is 3 : 4

$$\text{Vijay alone complete the work in } \frac{4}{3} \times 45 = 60 \text{ days}$$

$$\begin{aligned} \text{Surya's 1 day's work} &= \frac{1}{20} - \frac{1}{45} - \frac{1}{60} \\ &= \frac{9-4-3}{180} = \frac{1}{90} \end{aligned}$$

Work done by Ajith, Vijay and Surya =

$$\frac{1}{45} : \frac{1}{60} : \frac{1}{90} = 4:3:2$$

$$\text{Required wages} = \frac{2}{9} \times 36000 = \text{Rs. } 8000$$

$$23. (a) \quad 770 = \frac{1}{3} \times \frac{22}{7} \times x \times x \times 15$$

$$\Rightarrow x = 7$$

Radius of the cylinder = $7 \times 2 = 14$ cm

$$\Rightarrow 7392 = \frac{22}{7} \times 14 \times 14 \times h$$

$$\Rightarrow h = 12 \text{ cm}$$

24. (b) Let the total number of products in the showroom = x
Now,

$$14 \times 220 + 100(x - 14) = 120x$$

$$\Rightarrow 3080 + 100x - 1400 = 120x$$

$$\Rightarrow 20x = 1680$$

$$\Rightarrow x = 84$$

25. (b) Speed of boat = x

Speed of stream = y

$$x - y = 9 \dots (i)$$

$$\frac{168}{x \times \frac{80}{100} + y \times \frac{150}{100}} = 8$$

$$\frac{4x}{5} + \frac{3y}{2} = 21$$

$$8x + 15y = 210 \dots (ii)$$

From (i) and (ii)

$$y = 6 \text{ kmph}$$

26. (b) $(12.12\% \text{ of } 949.92) \div 3.12 = ?$

$$\Rightarrow (12\% \text{ of } 950) \div 3 = ?$$

$$\Rightarrow 38 = ?$$

$$27. (e) \quad \frac{92^2 - 86^2}{92 + 86} = ?$$

$$\Rightarrow ? = \frac{(92 - 86)(92 + 86)}{92 + 86}$$

$$\Rightarrow ? = 6$$

28. (c) $\sqrt{960} \times 4.99 + ? = 128.85 + 83 \times \sqrt{9.26} - 202.9$

$$\Rightarrow \sqrt{961} \times 5 + ? = 129 + 83 \times \sqrt{9} - 203$$

$$\Rightarrow 31 \times 5 + ? = 129 + 83 \times 3 - 203$$

$$\Rightarrow 155 + ? = 129 + 249 - 203$$

$$\Rightarrow ? = 20$$

ACHIEVERS In Focus

29. (a) $142.054 + 11.21\% \text{ of } 1023.92 = 24.712\% \text{ of } 524.12 - 10.12\% \text{ of } 67.32 + ?$

$$\Rightarrow 142 + 11\% \text{ of } 1024 = 25\% \text{ of } 524 - 10\% \text{ of } 67 + ?$$

$$\Rightarrow 142 + 113 - 131 + 7 = ?$$

$$\Rightarrow 131 = ?$$

ACHIEVERS In Focus

30. (d) Amount spends on shopping = $5x$

$$\text{Amount spends on education} = 5x \times \frac{140}{100} = 7x$$

$$\text{Salary of Ram} = \frac{100}{60} \times 12x = 20x$$

$$\text{Amount spends on house rent} = 20x \times \frac{40}{100} = 8x$$

$$8x \times \frac{20}{100} + 7x = 68800$$

$$\Rightarrow 8x + 35x = 68800 \times 5$$

$$\Rightarrow x = 8000$$

$$\text{Salary of Ram} = 8000 \times 20 = \text{Rs. } 160000$$

31. (d) Length of train A = Length of bridge = x

$$2x = 60 \times \frac{5}{18} \times 42$$

$$\Rightarrow x = 350\text{m}$$

ACHIEVERS In Focus

$$350 + \text{Length of train B} = 72 \times \frac{5}{18} \times 40$$

$$\text{Length of train B} = 450 \text{ m}$$

32. (b) CP of mobile = x

$$\text{CP of laptop} = 9900 - x$$

According to the question

$$x \times \frac{10}{100} = (9900 - x) \times \frac{8}{100}$$

$$\Rightarrow 10x = 79200 - 8x$$

$$\Rightarrow x = 4400$$

33. (b)

34. (d) I. $x^2 - 2x - 168 = 0$

$$x^2 - 14x + 12x - 168 = 0$$

$$(x - 14)(x + 12) = 0$$

$$x = 14, -12$$

II. $y^2 + 28y + 195 = 0$

$$y^2 + 13y + 15y + 195 = 0$$

$$(y + 13)(y + 15) = 0$$

$$y = -13, -15$$

$$x > y$$

35. (e) I. $x^2 - 576 = 793$

$$x^2 = 1369$$

$$x = -37, 37$$

II. $y = \sqrt{1369}$

$$y = 37$$

$$x \leq y$$

ACHIEVERS In Focus

